



# NON-COLLEGIATE WOMEN'S EDUCATION BOARD UNIVERSITY OF DELHI

UG-Online ADMISSIONS  
2021-22  
(Important Points)

आपका जाति  
प्रमाण पत्र आपके  
नाम से 31 मार्च  
2021 के बाद जारी  
होना चाहिए।

- ❖ 10वीं की मार्कशीट
- ❖ 12वीं की मार्कशीट
- ❖ पता प्रमाण-आधार कार्ड,  
ड्राइविंग लाइसेंस, पासपोर्ट,  
मतदाता पहचान पत्र (आवेदक  
के नाम पर होना चाहिए)
- ❖ आवेदक की जन्म तिथि  
प्रमाण पत्र
- ❖ जाति प्रमाण पत्र, यदि कोई  
हो (आवेदक के नाम पर होना  
चाहिए)

प्रवेश के बाद,  
विषय/शिक्षण केंद्र में  
कोई परिवर्तन की  
अनुमति नहीं है।

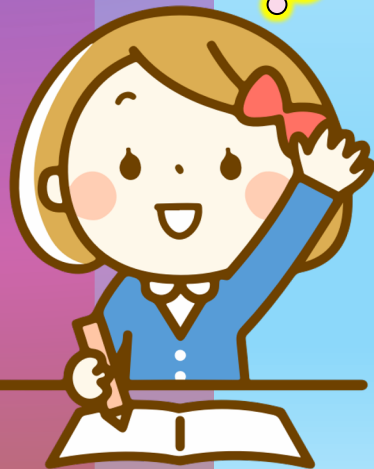
**NO CHANGE of  
Teaching  
Centre/subject  
is allowed after  
admission.**

**Avoid Cyber  
Café's  
debit/credit  
card for fee  
Payment.**

**Address  
Proof/Caste  
Certificate must be  
in the name of the  
Applicant.**



## Admission Schedule of NCWEB 2021-22



Process		Date
Online Registration		02.08.2021 (Monday) - 31.08.2021 (Tuesday)
1 <sup>st</sup> Admission Cut-off	Declaration	30 <sup>th</sup> October 2021(Saturday)
	Candidates to apply for admission against 1 <sup>st</sup> Cut-Off	10:00 AM 1 <sup>st</sup> November (Monday)-11:59 PM 5 <sup>th</sup> November (Friday)
	College to complete approvals for admission against 1 <sup>st</sup> Cut-Off	Till 5:00 PM 6 <sup>th</sup> November (Saturday)
	Last day of payment by candidates against 1 <sup>st</sup> Cut-Off	5:00 PM 7 <sup>th</sup> November (Sunday)
2 <sup>nd</sup> Admission Cut-off	Declaration	9 <sup>th</sup> November 2021(Tuesday)
	Candidates to apply for admission against 2 <sup>nd</sup> Cut-Off	10:00 AM 10 <sup>th</sup> November (Wednesday)-11:59 PM 12 <sup>th</sup> November (Friday)
	College to complete approvals for admission against 2 <sup>nd</sup> Cut-Off	Till 5:00 PM 13 <sup>th</sup> November (Saturday)
	Last day of payment by candidates against 2 <sup>nd</sup> Cut-Off	5:00 PM 14 <sup>th</sup> November (Sunday)
3 <sup>rd</sup> Admission Cut-off	Declaration	16 <sup>th</sup> November 2021(Tuesday)
	Candidates to apply for admission against 3 <sup>rd</sup> Cut-Off	10:00 AM 17 <sup>th</sup> November (Wednesday)-11:59 PM 20 <sup>th</sup> November (Saturday)
	College to complete approvals for admission against 3 <sup>rd</sup> Cut-Off	Till 5:00 PM 22 <sup>nd</sup> November (Monday)
	Last day of payment by candidates against 3 <sup>rd</sup> Cut-Off	5:00 PM 23 <sup>rd</sup> November (Tuesday)
Special Cut-off*	Declaration	25 <sup>th</sup> November 2021(Thursday)
	Candidates to apply for admission against Special Cut-Off	10:00 AM 26 <sup>th</sup> November (Friday)-11:59 PM 27 <sup>th</sup> November (Saturday)
	College to complete approvals for admission against Special Cut-Off	Till 5:00 PM 29 <sup>th</sup> November (Monday)
	Last day of payment by candidates against Special Cut-Off	5:00 PM 30 <sup>th</sup> November (Tuesday)
4 <sup>th</sup> Admission Cut-off	Declaration	2 <sup>nd</sup> December 2021(Thursday)
	Candidates to apply for admission against 4 <sup>th</sup> Cut-Off	10:00 AM 3 <sup>rd</sup> December (Friday)-11:59 PM 4 <sup>th</sup> December (Saturday)
	College to complete approvals for admission against 4 <sup>th</sup> Cut-Off	Till 5:00 PM 6 <sup>th</sup> December (Monday)
	Last day of payment by candidates against 4 <sup>th</sup> Cut-Off	5:00 PM 7 <sup>th</sup> December (Tuesday)
5 <sup>th</sup> Admission Cut-off	Declaration	9 <sup>th</sup> December 2021(Thursday)
	Candidates to apply for admission against 5 <sup>th</sup> Cut-Off	10:00 AM 10 <sup>th</sup> December (Friday)-11:59 PM 11 <sup>th</sup> December (Saturday)
	College to complete approvals for admission against 5 <sup>th</sup> Cut-Off	Till 5:00 PM 13 <sup>th</sup> December (Monday)
	Last day of payment by candidates against 5 <sup>th</sup> Cut-Off	5:00 PM 14 <sup>th</sup> December (Tuesday)
Special Drive*	Declaration	16 <sup>th</sup> December 2021(Thursday)
	Candidates to apply for admission against 5 <sup>th</sup> Cut-Off	10:00 AM 17 <sup>th</sup> December (Friday)-11:59 PM 18 <sup>th</sup> December (Saturday)
	College to complete approvals for admission against 5 <sup>th</sup> Cut-Off	Till 5:00 PM 20 <sup>th</sup> December (Monday)
	Last day of payment by candidates against 5 <sup>th</sup> Cut-Off	5:00 PM 21 <sup>st</sup> December (Tuesday)

\* These Cut-Offs will be declared only if there are vacant seats.

फ़ीस भुगतान  
के लिए साइबर  
कैफ़े के  
Debit/Credit  
कार्ड का उपयोग  
ना करें

## *Most Important Points to be Noted for admission in NCWEB*

- ❖ Only women candidates residing in NCT Delhi will be eligible for admission to UG courses of NCWEB, University of Delhi.
- ❖ A residence proof in the name of the candidate will be required at the time of the admission. It can be a valid **Aadhaar Card, Voter Identity Card, Passport, Driving License or Ration Card** (with the name of the candidate).
- ❖ The candidates are advised to take admission in the NCWEB Centre near their residence. **After taking admission in a NCWEB Centre, change of Centre or admission to any other NCWEB Centre is not allowed.**



❖ Ascertaining percentage in a specific cut-off for a Program in a College

**When applying for a cut-off, the Candidate must ensure her Best of Four fall within the declared cut-off. For Example,**

**If First Cut-off of a certain Program + Centre was 90.00%,**

**And, Second Cut-off for the same Program + Centre is 89.25%.**

**Then in order to apply for the said Program + Centre in the Second Cut-off, Best Four must be greater than or equal to 89.25% but less than 90.00% .**

- ❖ The Candidate is allowed to choose only one Program and centre during a particular cut-off, Selecting multiple **Program+Centre** in a particular cut-off is not permitted.
- ❖ Selection of Centre and Program can be made only through the Candidate's own Dashboard. No physical visit to the Centres/ University during the admission process is required.
- ❖ The procedure for choosing the Program and the centre by the Candidate must be completed within the stipulated time interval as notified.

## ❖ Instructions regarding Caste Certificate ↓

- ❖ Candidates belonging to **SC/ST/OBC-NCL/EWS/PwBD** must be in possession of the required caste/category certificates at the time of admissions.
  - ❖ Candidates under **OBC-NCL and EWS** categories shall be considered based on the certificates issued after March 31, 2021 only.
  - ❖ Due to covid-19 pandemic and as per last year practice, up to a maximum of 14 days duration may be given to candidates who seek admission by submitting undertaking with respect to their pending documents/certificates. However, all such pending cases must be cancelled by the Centres 4 days prior to the last date of admissions by all means.
  - ❖ Undertaking form can be downloaded from NCWEB Website <http://ncweb.du.ac.in/web/>
- 
- ❖ **Change of Category is not allowed** under any circumstances.
  - ❖ **Marksheets wherein a paper is of a Maximum of 50 marks will not be considered for calculating Best Four. Only 100 marks are to be considered.**
  - ❖ For **SUBJECT combinations in BA**, Check the NCWEB Bulletin link given at:  
**NCWEB Website. → <http://ncweb.du.ac.in/web/>**
  - ❖ **How to Calculate best four marks? (See Next Slide)**(List A and B as notified by the University are given below)

**List A: Language Subjects**

<b>List A1</b>					<b>List A2</b>
Assamese Core/ Assamese Elective	Gujarati Core/ Gujarati Elective	Maithili Core/ Maithili Elective	Odia Core/ Odia Elective	Tamil Core/ Tamil Elective	Arabic Core/ Arabic Elective
Bengali Core/ Bengali Elective	Hindi Core/ Hindi Elective	Malayalam Core/ Malayalam Elective	Punjabi Core/ Punjabi Elective	Telegu Core/ Telegu Elective	French Core/ French Elective
Bodo Core/ Bodo Elective	Kannada Core/ Kannada Elective	Manipuri Core/ Manipuri Elective	Sanskrit Core/ Sanskrit Elective	Urdu Core/ Urdu Elective	German Core/ German Elective
<u>Dogri</u> Core/ <u>Dogri</u> Elective	Kashmiri Core/ Kashmiri Elective	Marathi Core/ Marathi Elective	<u>Santhali</u> Core/ <u>Santhali</u> Elective		Italian Core/ Italian Elective
English Core/ English Elective	Konkani Core/ Konkani Elective	Nepali Core/ Nepali Elective	Sindhi Core/ Sindhi Elective		Persian Core/Persian Elective
					Spanish Core/ Spanish Elective



**List B (Elective Subjects)**

Accountancy	Computer Science/Computer Applications/Informatics Practices	Mathematics
Anthropology	Economics	Philosophy/Logic and Philosophy
Biology/Biochemistry/Biotechnology	Geography	Physics
Business Mathematics	Geology	Political Science
Chemistry	History	Psychology
Civics	Home Science	Sociology
Commerce/Business Studies	Legal Studies	Statistics

# ADMISSION CRITERIA (Notified in the Bulletin of Information (BOI) of University of Delhi)

A maximum of two language subjects may be allowed for the calculation of marks for best four combinations; however, out of the two languages one could be a core language. (For Both BA and BCom)

<b>B.A. Prog. (Discipline Subject Combination based Admission)</b>	<ul style="list-style-type: none"><li>• An aggregate of 40% marks in the qualifying examination.</li><li>• The merit shall be determined <u>on the basis of</u> one language (core/elective/functional) and three best academic/elective subjects as specified in List A and List B above may be chosen.</li><li>• One non-listed subject (besides the elective subjects in Lists A and B) can be included in calculation of 'Best Four' without any deduction.</li><li>• If more than one non-listed subject is included for calculation of 'Best Four', a deduction of 2.5% each in 'Best Four' may be levied.</li></ul>
<b>B. Com.</b>	<ul style="list-style-type: none"><li>• An aggregate of 40% marks in the qualifying examination.</li><li>• Selection shall be made <u>on the basis of</u> marks obtained in qualifying examination including one language and three best subjects as per the following:</li><li>• An aggregate of 40% or more in English/Hindi and combination of the best three from among the following subjects: Mathematics, Accountancy, Economics and Business Studies/Commerce.</li><li>• Inclusion of any subject from List B other than mentioned above in the combination of best three will lead to a deduction of 1% per subject on the aggregate.</li><li>• Inclusion of any subject other than those in Lists A and B in the combination of best three will lead to a deduction of 2.5% per subject on the aggregate of the Best Four</li></ul>

## Calculation of Best Four Marks

### ILLUSTRATION 1:

English	92
Geography	85
Home Science	89
Political Science	90
History	80
Physical Education	88

**BA:**  $(92+89+90+88)/4 = 89.75\%$  (One Non-listed subject i.e. **Physical Education** included in the best four without any deduction)

**BCOM:**  $(92+89+90+85)/4 = 89\% - 3\% = 86\%$  (1% deduction for inclusion of each subject (**Geography, H Science, Pol Sc**) from List B other than Mathematics, Accountancy, Economics and Business Studies)

### ILLUSTRATION 2:

English	95
Geography	90
Political Science	92
History	94
Physical Education	99

**BA:**  $(95+92+94+99)/4 = 95\%$  (One Non-listed subject i.e. **Physical Education** included in the best four without any deduction)

**BCOM:**  $(95+90+92+94)/4 = 92.75\% - 3\% = 89.75\%$  (1% deduction for inclusion of each subject (**Geography, Pol Sc, History**) from List B other than Mathematics, Accountancy, Economics and Business Studies)



**ILLUSTRATION 3:**

<b>English</b>	<b>90</b>
<b>Physics</b>	<b>85</b>
<b>Chemistry</b>	<b>90</b>
<b>Mathematics</b>	<b>75</b>
<b>Biology</b>	<b>85</b>

**BA:**  $(90+85+90+85)/4= 87.5\%$  (Three subject from list B (Physics, Chemistry, biology) are included in the best four without any deduction)

**BCOM:**  $(90+85+90+85)/4= 87.5\%-3\%= 84.5\%$  (1% deduction for inclusion of each subject(Physics, Chemistry, Biology) from List B other than Mathematics, Accountancy, Economics and Business Studies)

**ILLUSTRATION 4:**

<b>English</b>	<b>88</b>
<b>Business Studies</b>	<b>92</b>
<b>Accounts</b>	<b>90</b>
<b>Mathematics</b>	<b>85</b>
<b>Home Science</b>	<b>94</b>

**BA:**  $(88+92+90+94)/4= 91\%$  (Three subject from list B (B Studies, A/Cs, H Science) are included in the best four without any deduction)

**BCOM:**  $(88+92+90+94)/4= 91\%- 1\%= 90\%$  (1% deduction for inclusion of each subject(Home Science) from List B other than Mathematics, Accountancy, Economics and Business Studies)

**ILLUSTRATION 5:**

English	92
Business Studies	95
Accounts	90
Mathematics	90
Physical Education	98

**BA:**  $(92+95+90+98)/4 = 93.75\%$  (One Non-listed subject i.e. **Physical Education** included in the best four without any deduction)

**BCOM:**  $(92+95+90+90)/4 = 91.75\%$   
(English, Business studies, A/Cs, and Mathematics taken in the best four)

**ILLUSTRATION 6:**

English	88
Business Studies	92
Accounts	90
Mathematics	85
Physical Education	99

**BA:**  $(88+92+90+99)/4 = 92.25\%$  (Two subjects from list B (**B Studies, A/Cs**) are included in the best four and Physical education also included without any deduction)

**BCOM:**  $(88+92+90+99)/4 = 92.25\% - 2.5\% = 89.75\%$   
(2.5 % deduction for inclusion of **non-listed subject (Physical Education)**  
**Other than List A and List B**)

**ILLUSTRATION 7:**

English	92
Hindi Elective	95
Business Studies	95
Accounts	90
Mathematics	90
Physical Education	98

**ILLUSTRATION 8:**

Hindi	88
Hindi Elective	93
Business Studies	85
Accounts	80
Mathematics	86
Physical Education	99

**BA:**  $(92+95+95+98)/4= 95\%$  (English and Hindi Elective are included in the best four)

**BCOM:**  $(92+95+95+90)/4= 93\%$  (English and Hindi Elective are included in the best four)

**\* One Core and one Elective language can be taken in the best four in both BA and B.Com Program.(Page No.11 and 16, Bulletin of Information, University of Delhi)**

**BA:**  $(88+93+86+99)/4= 91.5\%$  (Both Hindi and Hindi Elective are included in the best four) (One Non-listed subject i.e. Physical Education included in the best four without any deduction)

**BCOM:**  $(88+93+86+99)/4= 91.5\%- 2.5\%= 89\%$

(2.5 % deduction for inclusion of **these subject(Physical Education) Other than List A and List B**)






**After LOGIN, you get this sheet. Click here**

The screenshot shows a web browser at the URL `ugadmission.uod.ac.in/index.php/app/dashboard`. The header is dark purple with the University of Delhi logo and text: "दिल्ली विश्वविद्यालय University of Delhi" and "UG Admissions 2021 Information Bulletin". On the right, it says "FORM NUMBER : 21188778". Below the header is a navigation bar with links: "HOME", "COURSES & COLLEGES", "LIFE@DU", "Helpdesk", and a user profile dropdown. A secondary navigation bar contains links: "Registration Form", "My Applications", "Cut-off", "Bank Detail", and "Suggestive Percentage". The main content area has two sections: "Merit-based Admissions" and "NCWEB Admissions". Both sections contain a message about the current cutoff and a red "My Applications" button. A purple arrow points from the text "Click here" in the top banner to the "My Applications" button in the "NCWEB Admissions" section.

← → ↻ 🔒 ugadmission.uod.ac.in/index.php/app/dashboard ☆ + 📧 ⚙️ S Update ⋮

 दिल्ली विश्वविद्यालय  
University of Delhi

**UG Admissions 2021  
Information Bulletin**

FORM NUMBER : 21188778

HOME COURSES & COLLEGES LIFE@DU Helpdesk [User Name] @gmail.com

Registration Form My Applications Cut-off Bank Detail Suggestive Percentage

### Merit-based Admissions

Apply in college for the current cutoff in merit based admission is closed. Please visit university site for latest notifications. Check your application status in My Applications tab.

[My Applications](#)

### NCWEB Admissions

No NCWEB Cut-off active. Please visit university site for latest notifications.

[My Applications](#)

© University of Delhi 2021 Powered By: Samarth

## STEPS to Apply for a PROGRAM

### Step I: Select a Program + Centre

Upon declaration of a Cut-Off list, Candidates must log in to their Dashboard to choose the Program and Centre they wish to claim admission to, provided they meet the required eligibility conditions and their Best Four fall within the range of the cut-off declared by the respective College/Program.

### Step II: 'Apply' for the Program + Centre combination from the dashboard

- ❖ 10<sup>th</sup> Marksheet
- ❖ 12<sup>th</sup> Marksheet
- ❖ Address Proof-Aadhar Card, Driving license, Passport, Voter-ID (Must be in the name of the Applicant)
- ❖ Date of Birth Certificate of the Applicant
- ❖ Caste Certificate, if any

### LIST of documents required

### Step III: Online verification of documents by respective centre

1. On receiving the application, the Centres verify the application and documents to Approve/Decline the candidature. The Centres verify the documents uploaded by the Candidate for eligibility and meeting the required Cut-Off.
2. Verification of documents is done at various stages by the Centres:
  - Teacher in-charges & the Admission Team of the respective Centres will verify the minimum qualifications and cut-off requirement.
  - Teacher-in-charge rechecks and Approve/Reject the candidature.
  - Finally, **the Principal will Approve/Reject the candidature.**
3. In case of lack of necessary documents, candidate will be contacted on their registered email id /phone by the respective Centre, so that the same may be provided directly to the Centre. All Centres will designate an email id for receiving documents/clarifications from the Candidates. In case the candidate does not respond, or where documents remain insufficient till the specified date/time, the candidature will be rejected by citing reason.
4. **No application will be left undecided. It will either be Approved or Rejected by the Principal of the Centre.**
5. The Candidates shall check the status of their application on the dashboard.
6. Those Candidates whose applications are 'Approved by the Principal', are required to pay the fee within the stipulated time. In case any candidate is not satisfied with the reason for rejection (as given by the college), a grievance may be registered with the **NCWEB Grievance Redressal Committee** through Helpdesk email of NCWEB, which is

**helpdesk\_ugadmission@ncweb.du.ac.in**



#### **Step IV: Payment of fees to confirm admission**

On receiving the status, 'Approved by Principal' of the Centre, the Candidate will receive a link on her Dashboard to submit the fees due. This fee can be paid online through the dashboard within the stipulated time only.



- ❖ On successful payment of the fees an acknowledgement slip bearing transaction ID, Credit Card/ Debit card/ Net-banking details and date of transaction as will be generated a proof for future reference. On successful payment of fees, the candidate is granted provisional admission to the said centre.
- ❖ Once the Candidate has taken admission, they will have to sign an online declaration stating, "All the information provided by is correct. In case any information provided by me is found to be false and/or is not supported by the documents presented by me, I understand that the admission will be immediately cancelled and no fees will be refunded. I shall abide by all the rules and regulations laid down by the University and the Centre."

- ❖ The uploaded documents will be verified physically by the respective centres within the stipulated time period as and when notified by the University. If at any stage, it is found that the information given by the Candidate is false/incorrect/fabricated/ingenuine and/or is not supported by the documents presented, the admission will be immediately cancelled without giving any prior notice. No fees will be refunded in such cases.
- ❖ A Candidate who 'Applied' in any Cut-off and for whom the admission was 'Approved by Principal' in a particular Program+Centre but did not pay the fees and wish to seek admission in any subsequent Cut-off will have to "Cancel" her previously approved application and re-apply for a Program+Centre combination and repeat the process. A non-refundable cancellation fee of Rs. 1000.00 (Rupees One Thousand only) will be levied.

**Contact Details &  
Grievance E-mail  
ID of NCWEB  
Teaching centres.**

<b>Non-Collegiate Women's Education Board(NCWEB) University of Delhi, Delhi-110007</b>			
<b>NCWEB Online UG &amp; PG Admission 2021-22 Grievance E-mail Id &amp;</b>			
<b>S.N .</b>	<b>College Centre's Name</b>	<b>Grievance E-mail ID</b>	<b>Mobile No</b>
<b>1</b>	<b>Aditi Mahavidyalaya</b>	<b>aditincweb@gmail.com</b>	<b>9899144667</b>
			<b>8587838546</b>
			<b>8447445090</b>
			<b>8874227184</b>
			<b>9953679292</b>
			<b>9990848969</b>
			<b>9654645649</b>
<b>2</b>	<b>Aryabhatta College</b>	<b>ncweb@aryabhattachcollege.ac.in</b>	<b>8595747648</b>
<b>3</b>	<b>Bhagini Nivedia College</b>	<b>ncwebbnc2021@gmail.com</b>	<b>8368501990</b>
<b>4</b>	<b>Bharti College</b>	<b>ncwebadmissions@bharati.du.ac.</b>	<b>9953423937</b>
<b>5</b>	<b>College of Vocational Studies</b>	<b>admission.ncweb@cvs.du.ac.in</b>	<b>9811020349</b>
		<b>kunalkishor24@yahoo.com</b>	<b>9911016315</b>
<b>6</b>	<b>Deen Daivalupadhavav</b>	<b>dducncwebadmission@gmail.com</b>	<b>9310455226</b>
<b>7</b>	<b>Dr. B.R. Ambedkar College</b>	<b>dkkharwar@yahoo.co.in</b>	<b>9650881793</b>
		<b>anamika.315031@gmail.com</b>	<b>8377018110</b>
<b>8</b>	<b>Hansraj College</b>	<b>hansraj_ncweb@hrc.du.ac.in</b>	<b>9968358884</b>
<b>9</b>	<b>Janki Devi Memorial College</b>	<b>jdmncweb@jdm.du.ac.in</b>	<b>9958416756</b>
<b>10</b>	<b>Jesus &amp; Mary College</b>	<b>ncwebadmissions@jmc.ac.in</b>	<b>8447712235</b>
<b>11</b>	<b>Kalindi College</b>	<b>ncweb.kalindi@gmail.com</b>	<b>87004 85998</b>
			<b>88605 58709</b>
<b>12</b>	<b>Keshav Mahavidyalaya</b>	<b>kmvncwebadmission@gmail.com</b>	<b>9311119116</b>

**Contact Details &  
Grievance E-mail  
ID of NCWEB  
Teaching centres.**

13	Lakshmi Bai College	<a href="mailto:babitaverma@lb.du.ac.in">babitaverma@lb.du.ac.in</a>	9313993833
		<a href="mailto:akumar@lb.du.ac.in">akumar@lb.du.ac.in</a>	9971569904
		<a href="mailto:ncweb@lb.du.ac.in">ncweb@lb.du.ac.in</a>	
14	Maharaja Agrasen College	<a href="mailto:ncwebmac@mac.du.ac.in">ncwebmac@mac.du.ac.in</a>	9310479983
15	Maitreyi College	<a href="mailto:ncweb.admissions@maitreyi.du.ac.in">ncweb.admissions@maitreyi.du.ac.in</a>	8700866413
16	Mata Sundri College	<a href="mailto:ncwebmscswadmission2021@gmail.com">ncwebmscswadmission2021@gmail.com</a>	8586898631
17	Miranda House	<a href="mailto:sonali.chitalkar@mirandahouse.ac.in">sonali.chitalkar@mirandahouse.ac.in</a>	8800336487
		<a href="mailto:jitender@mirandahouse.ac.in">jitender@mirandahouse.ac.in</a>	9650856989
		<a href="mailto:vinod.prasad@mirandahouse.ac.in">vinod.prasad@mirandahouse.ac.in</a>	8860335462
		<a href="mailto:aks17aug@gmail.com">aks17aug@gmail.com</a>	9818802041
18	Moti Lal Nehru College	<a href="mailto:mlncweb@mln.du.ac.in">mlncweb@mln.du.ac.in</a>	9873115075
19	PGDAV	<a href="mailto:pgdavncweb.grievances@gmail.com">pgdavncweb.grievances@gmail.com</a>	9871328288
20	Rajdhani College	<a href="mailto:ticncweb@rajdhani.du.ac.in">ticncweb@rajdhani.du.ac.in</a>	9990669950
21	Ramanujan College	<a href="mailto:rcncweb2020@gmail.com">rcncweb2020@gmail.com</a>	9350219046
22	Satyawati College (Evening)	<a href="mailto:grivncwebsce342@gmail.com">grivncwebsce342@gmail.com</a>	9131319934
		<a href="mailto:noncwebsce.342@gmail.com">noncwebsce.342@gmail.com</a>	9868714657
23	SGGSCC	<a href="mailto:ss.lamba08@gmail.com">ss.lamba08@gmail.com</a>	9868122507
24	SPM College	<a href="mailto:admissionspmncweb@gmail.com">admissionspmncweb@gmail.com</a>	8882485285
25	Sri Aurobindo College	<a href="mailto:dr.anjalibhatnagar@gmail.com">dr.anjalibhatnagar@gmail.com</a>	9582626035
26	Vivekanand College	<a href="mailto:vncncweb@yahoo.com">vncncweb@yahoo.com</a>	9903092226
			8882135278
27	NCWEB PG Centre	<a href="mailto:helpdesk_pgadmission@ncweb.du.ac.in">helpdesk_pgadmission@ncweb.du.ac.in</a>	7838819979

For any further query/grievance you can also mail at- [helpdesk\\_ugadmission@ncweb.du.ac.in](mailto:helpdesk_ugadmission@ncweb.du.ac.in)



**Good Wishes for a  
Smooth Admission  
Process!!**



**Prepared by:**

**NCWEB Admission Helpdesk & Grievance Committee**

**Non-Collegiate Women's Education Board, University of Delhi**